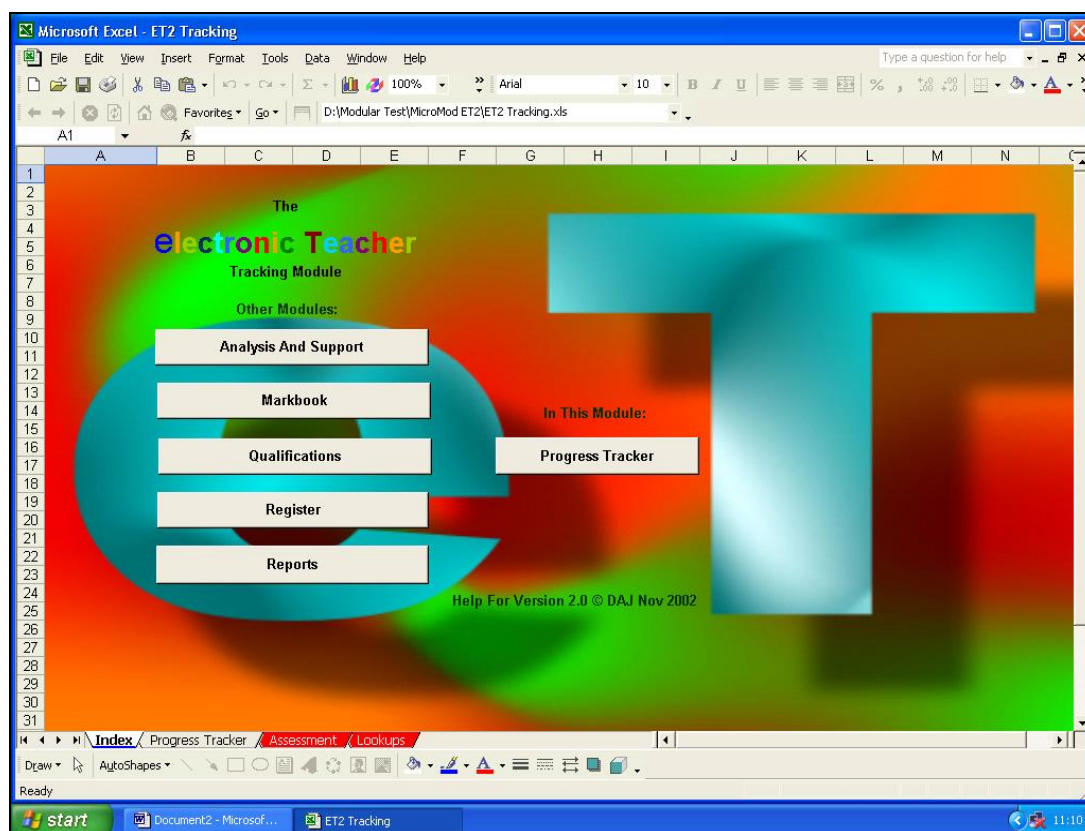


Progress Tracking Module

The Tracking Module allows for setting, recording and monitoring of student performance relative to pre-set targets.



As ever, student details are populated from the main Markbook Module.

To start setting up the Progress Tracking Module, an assessment index should be entered. This can be any of the assessment indices defined in the Markbook Module.¹

Once the index is specified, appropriate level indicators for that index can be inserted for individual initial and target performance targets.

Index		Tracker Help															
Progress Tracking																	
Group																	
Assessment Index																	
11 v1																	
nc																	
NB	Surname	First Name	TG	M/F	CAT	Initial KS5 Grade	Interim Grade 1	Interim Grade 2	Interim Grade 3	Interim Grade 4	Interim Grade 5	Target KS5 Grade	Progress Index 1	Progress Index 2	Progress Index 3	Progress Index 4	Progress Index 5
1	ARSENAL	Alexis	KS	F	80	2a	1c	2b	2c	3a	3b	3b	25%	25%	50%	75%	
2	BOLTON	Billy	KS	M	86	2c	3a	3b	3c	4b	4c	5a	14%	29%	43%	71%	86%
3	CHELSEA	Charlie	KS	M	106	3b	3b	3c	4a	3c	5c		0%	14%	29%	14%	
4	DERBY	David	KS	M	114												
5	EVERTON	Erica	KS	F	110												

At relevant intervals, interim grades can be inserted.

¹ E.g. 'A' for Achievement, 'E' for 'Effort, or 'NC' for National Curriculum level.

The module outputs a percentage indicator of progress. Should an interim grade fall below the minimum target grade, this percentage is indicated in red.

Initial KS5 Grade	Interim Grade 1	Interim Grade 2	Interim Grade 3	Interim Grade 4	Interim Grade 5	Target KS5 Grade	Progress Index 1	Progress Index 2	Progress Index 3	Progress Index 4	Progress Index 5
2a	1c	2b	2c	3a		3b	-25%	25%	50%	75%	
2c	3a	3b	3c	4b	4c	5a	14%	29%	43%	71%	86%
3b	3b	3c	4a	3c		5c	0%	14%	29%	14%	

As well as the percentage progress scores, a set of 'traffic light' indicators show whether the student has made progress from one interim grade to the next...green for 'progress made', amber for 'no progress made', and red for 'performance worse'.