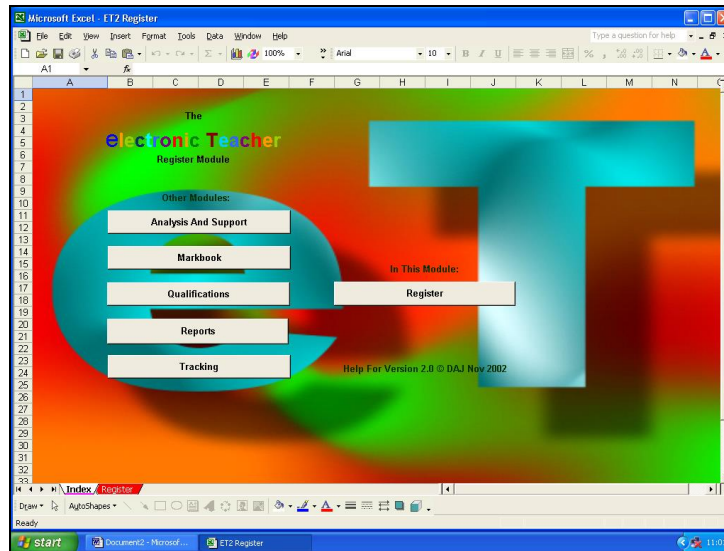


Register Module

The Register Module provides some of the more simple and straightforward of ET's facilities.



As ever, student details are automatically transferred from the main Markbook Module.

Attendance dates can be added at the top of each column and students are shown as being present by inserting a '1', absent by inserting a '0' and late by inserting a '#'. The module automatically and immediately calculates the number of absences, the percentage attendance rate and the number of lates, indicating poor attendance rates and high late counts in red.

Index		Register Help																	
Group	xIT3	Σ	% Att	Σ Att	Att														
Girls	28	45	98%	91%	70	01/01/2003	02/01/2003	03/01/2003	04/01/2003	05/01/2003	06/01/2003	07/01/2003	08/01/2003	09/01/2003	10/01/2003	11/01/2003	12/01/2003	13/01/2003	
Boys	17		79%			40	36	38	40	34	37	37	40	40	35	40	40	40	
Surname	First Name	TG	M/F	Att	Abs	Late													
1	ARSENAL	Alexis	KS	F	100%	0	0	1	1	1	1	1	1	1	1	1	1	1	
2	BOLTON	Billy	KS	M	100%	0	4	1	#	#	1	1	#	#	#	1	1	1	
3	CHELSEA	Charlie	KS	M	100%	0	5	1	#	#	1	#	#	#	1	1	1	1	
4	DERBY	David	KS	M	100%	0	0	1	1	1	1	1	1	1	1	1	1	1	
5	EVERTON	Erica	KS	F	78%	44	0	1	0	1	1	0	0	0	1	1	0	1	
6	FULHAM	Fiona	KS	F	100%	0	0	1	1	1	1	1	1	1	1	1	1	1	
7	GILLINGHAM	George	KS	M	100%	0	0	1	1	1	1	1	1	1	1	1	1	1	
8	HULL	Helen	KS	F	80%	41	0	1	1	1	1	0	1	1	1	1	0	1	
9	INVERNESS	Iona	KS	F	100%	0	0	1	1	1	1	1	1	1	1	1	1	1	
10	JOHNSTONE	Jill	KS	F	100%	1	0	1	0	1	1	1	1	1	1	1	1	1	
11	KIDDERMINSTER	Karen	KS	F	100%	0	0	1	1	1	1	1	1	1	1	1	1	1	
12	LEEDS	Laura	KS	F	100%	0	0	1	1	1	1	1	1	1	1	1	1	1	
13	MANCHESTER	Maureen	KS	F	100%	0	0	1	1	1	1	1	1	1	1	1	1	1	
14	NORWICH	Neil	KS	M	80%	41	0	1	1	1	1	0	1	1	1	1	0	1	
15	ORIENT	Oswald	KS	M	100%	0	0	1	1	1	1	1	1	1	1	1	1	1	
16	PRESTON	Peter	KS	M	100%	0	0	1	1	1	1	1	1	1	1	1	1	1	
17	QPR	Queenie	KS	F	100%	0	41	1	1	1	1	#	1	1	1	1	#	1	
18	ROCHDALE	Rosie	KS	F	100%	0	0	1	1	1	1	1	1	1	1	1	1	1	
19	SUNDERLAND	Susan	KS	F	100%	0	0	1	1	1	1	1	1	1	1	1	1	1	
20	TOTTENHAM	Tina	KS	F	100%	0	0	1	1	1	1	1	1	1	1	1	1	1	
21	UNITED	Uma	KS	F	100%	0	41	1	1	1	1	#	1	1	1	1	#	1	

The module also calculates student numbers and attendance rates, both overall and by gender, as well as the total number of possible attendances. Again, significantly poor attendance rates by gender are highlighted in red.